

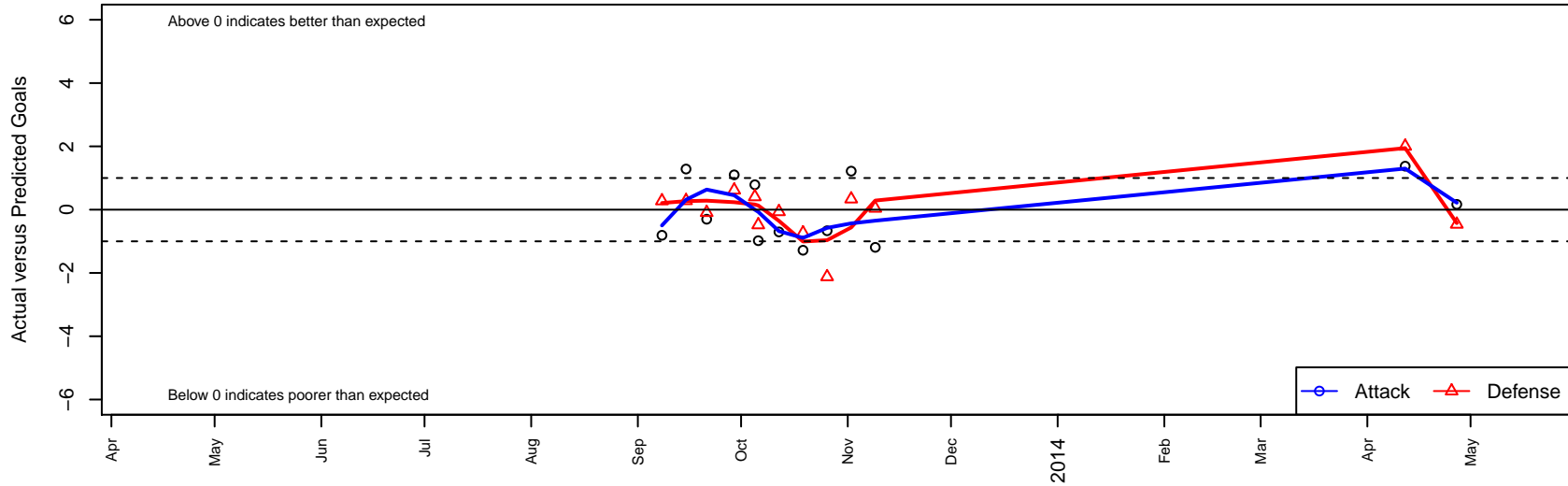
# CUSC Blue B99

, CAS  
 B99 total strength=1548  
 attack=16.09 defense=11.13  
 fall league = CSL Premier U14  
 alt names used:  
 CUSC 99 BLUE

Venues played:  
 CSL Premier U14  
 SoCal National Cup B99



**CUSC Blue B99**  
 Dots are actual minus expected GF (blue circles) and GA (red triangles).  
 Blue line is smoothed change in attack strength. Red is smoothed change in defense strength.



	<b>date</b>	<b>home</b>		<b>away</b>		<b>venue</b>	<b>pred.home</b>	<b>pred.away</b>
26981	2014-04-27	Real So Cal White B99	2	CUSC Blue B99	2	SoCal National Cup B99	1.54	1.83
26124	2014-04-12	CUSC Blue B99	2	Los Angeles Futbol Academy 2000B	0	SoCal National Cup B99	0.63	2.00
17811	2013-11-09	Valley United B99	2	CUSC Blue B99	0	CSL Premier U14	2.04	1.19
16871	2013-11-02	CUSC Blue B99	2	FC Golden State Gold B99	2	CSL Premier U14	0.78	2.34
15991	2013-10-26	Fullerton Rangers White B99	5	CUSC Blue B99	0	CSL Premier U14	2.88	0.67
15053	2013-10-19	CUSC Blue B99	0	Olimpia SC B99	2	CSL Premier U14	1.28	1.26
14003	2013-10-12	Chivas USA Academy B99	2	CUSC Blue B99	1	CSL Premier U14	1.93	1.70
13368	2013-10-06	FC Deportivo Panteras B99	2	CUSC Blue B99	0	CSL Premier U14	1.52	0.98
12993	2013-10-05	CUSC Blue B99	2	Oxnard PAL B99	1	CSL Premier U14	1.21	1.41
12368	2013-09-29	FC Manchester United Red B99	1	CUSC Blue B99	2	CSL Premier U14	1.62	0.90
11098	2013-09-21	CUSC Blue B99	1	FC Golden State Platinum B99	1	CSL Premier U14	1.30	0.91
10482	2013-09-15	Milan SC Red B99	1	CUSC Blue B99	3	CSL Premier U14	1.28	1.72
9529	2013-09-08	CUSC Blue B99	0	Corinthians B99	3	CSL Premier U14	0.81	3.28